

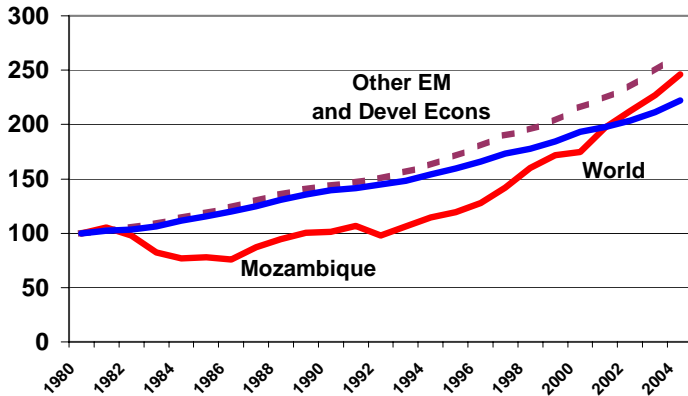


MOZAMBIQUE

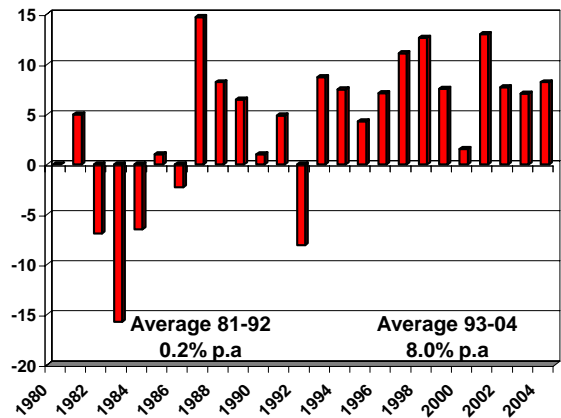


- * After years of sub-par and negative growth in the early 1980s, Mozambique
- * Mozambique's growth in domestic investment
- * While two-thirds of Mozambique's exports
- * Mozambique has invested in its people
- * According to Transparency International, Mozambique is
- * The World Economic Forum rates Mozambique

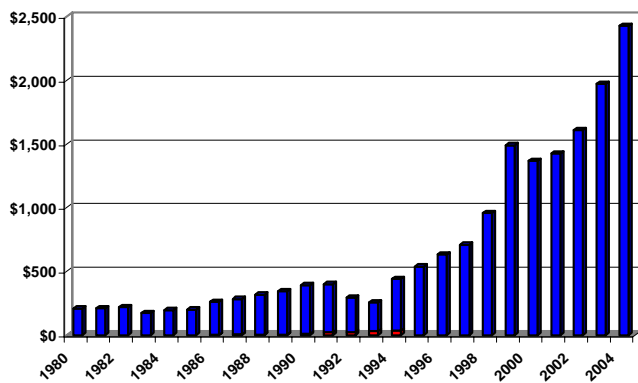
Economic Growth, 1980=100



Real GDP Growth 1980-2004



Domestic Fixed Investment (\$ mil)



PRS International Risk Rating (100 = Best)

